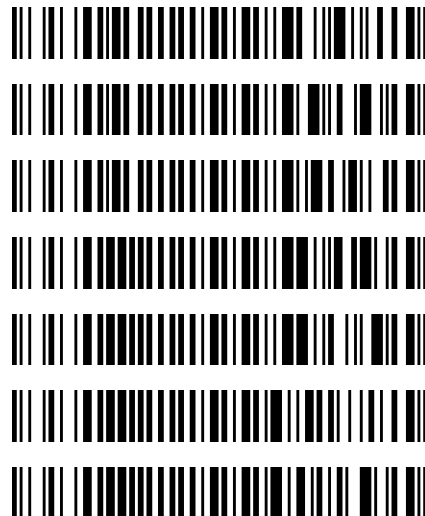


Worklist: 1019

<u>LAB_CASE</u>	<u>ITEM</u>	<u>TASK_ID</u>	<u>DESCRIPTION</u>
M2015-4136	1	51424	6.1.2 Blood Cannabinoids by LC
M2015-4198	1	51408	6.1.2 Blood Cannabinoids by LC
M2015-4230	1	51412	6.1.2 Blood Cannabinoids by LC
P2015-2574	1	51413	6.1.2 Blood Cannabinoids by LC
P2015-2579	1	51414	6.1.2 Blood Cannabinoids by LC
P2015-2608	1	51415	6.1.2 Blood Cannabinoids by LC
P2015-2683	1	51411	6.1.2 Blood Cannabinoids by LC



reviewed 2/26/16

Worklist Report

Negative control vial broke so samples were reinjected on 2-22-16 ☺

Worklist Path:	C:\MassHunter\ISP Methods\worklists\CS Combined 021916.wkl
Date Modified:	02/19/2016 12:39:42 PM
Date Printed:	02/19/2016 12:44:39 PM

Worklist Run Parameters

Operator Name:	62340
Run Type:	Standard Start
Part of Method to Run:	Acquisition Only
Execution for Acquisition-DA:	Synchronous
Acquisition Method Path:	C:\MassHunter\ISP Methods\Acquisition
DA Method Path:	D:\MassHunter\methods
Data File Path:	C:\MassHunter\Data\1-28-16 test
Pre-Worklist Script:	---
Post-Worklist Script:	SCP_InstrumentStandby(){MH_Acq_Scripts.exe}
Acquisition Clean Up Script:	SCP_InstrumentStandby(){MH_Acq_Scripts.exe}
Overlapped Injection:	No
Clear sample selection after run:	Yes
Wait Time for Ready(Min):	10
Threshold Disk Value(GB):	10
Comment:	---

Plate Barcode Information

Plate	Barcode
P1	
P2	

Worklist Table

Sample Position	Sample Name	Method	Data File	Sample Type	Level Name	Comment	Info.
P2-A1	Blank	isp blood cannabinoids Poky 2016.m	Blank1-r001.d	Blank		AM 6.1.2 Cannabinoids by LCQQQ	
P2-A1	Blank	isp blood cannabinoids Poky 2016.m	Blank2-r001.d	Blank		AM 6.1.2 Cannabinoids by LCQQQ	
P2-A2	Blood: 1_5 ng/mL	isp blood cannabinoids Poky 2016.m	B_CAL1-r001.d	Calibration	1	AM 6.1.2 Cannabinoids by LCQQQ	c-THC @5ng/mL, all others @1 ng/mL
P2-A3	Blood: 2_10 ng/mL	isp blood cannabinoids Poky 2016.m	B_CAL2_r001.d	Calibration	2	AM 6.1.2 Cannabinoids by LCQQQ	c-THC @10ng/mL, all others @2 ng/mL
P2-A4	Blood: 5_25 ng/mL	isp blood cannabinoids Poky 2016.m	B_CAL3_r001.d	Calibration	3	AM 6.1.2 Cannabinoids by LCQQQ	c-THC @25ng/mL, all others @5 ng/mL
P2-A5	Blood: 10_50 ng/mL	isp blood cannabinoids Poky 2016.m	B_CAL4_r001.d	Calibration	4	AM 6.1.2 Cannabinoids by LCQQQ	c-THC @50ng/mL, all others @10 ng/mL
P2-A6	Blood: 25_125 ng/mL	isp blood cannabinoids Poky 2016.m	B_CAL5_r001.d	Calibration	5	AM 6.1.2 Cannabinoids by LCQQQ	c-THC @125ng/mL, all

Sample Position	Sample Name	Method	Data File	Sample Type	Level Name	Comment	Info. 
							others @25 ng/mL
P2-A7	Blood: 50_250 ngmL	isp blood cannabinoids Poky 2016.m	B_CAL6_r001.d	Calibration	6	AM 6.1.2 Cannabinoids by LCQQQ	c-THC @250ng/mL, all others @50 ng/mL
P2-A8	Blood: 100_500 ngmL	isp blood cannabinoids Poky 2016.m	B_CAL7_r001.d	Calibration	7	AM 6.1.2 Cannabinoids by LCQQQ	c-THC @500ng/mL, all others @100 ng/mL
P2-A1	Blank	isp blood cannabinoids Poky 2016.m	Carryover blank1_r001.d	Blank		AM 6.1.2 Cannabinoids by LCQQQ	
P2-A9	Blood Negative Control	isp blood cannabinoids Poky 2016.m	B-NC-r001.d	Sample		AM 6.1.2 Cannabinoids by LCQQQ	Negative Blood UTAK Lot B0689
P2-B1	Blood 3_15ngmL	isp blood cannabinoids Poky 2016.m	B-3_15-r001.d	Sample		AM 6.1.2 Cannabinoids by LCQQQ	c-THC @15ng/mL, all others @3 ng/mL
P2-A9	Blank M2015-4136-1	isp blood cannabinoids Poky 2016.m	M2015-4136-1_BLK_r001.d	Blank		AM 6.1.2 Cannabinoids by LCQQQ	
P2-B2	M2015-4136-1	isp blood cannabinoids Poky 2016.m	M2015-4136-1-r001.d	Sample		AM 6.1.2 Cannabinoids by LCQQQ	Blood
P2-A9	Blank M2015-4198-1	isp blood cannabinoids Poky 2016.m	M2015-4198-1_BLK_r001.d	Blank		AM 6.1.2 Cannabinoids by LCQQQ	
P2-B3	M2015-4198-1	isp blood cannabinoids Poky 2016.m	M2015-4198-1-r001.d	Sample		AM 6.1.2 Cannabinoids by LCQQQ	Blood
P2-A9	Blank M2015-4230-1	isp blood cannabinoids Poky 2016.m	M2015-4230-1_BLK_r001.d	Blank		AM 6.1.2 Cannabinoids by LCQQQ	
P2-B4	M2015-4230-1	isp blood cannabinoids Poky 2016.m	M2015-4230-1-r001.d	Sample		AM 6.1.2 Cannabinoids by LCQQQ	Blood
P2-A9	Blank P2015-2574-1	isp blood cannabinoids Poky 2016.m	P2015-2574-1_BLK_r001.d	Blank		AM 6.1.2 Cannabinoids by LCQQQ	
P2-B5	P2015-2574-1	isp blood cannabinoids Poky 2016.m	P2015-2574-1-r001.d	Sample		AM 6.1.2 Cannabinoids by LCQQQ	Blood
P2-A9	Blank P2015-2579-1	isp blood cannabinoids Poky 2016.m	P2015-2579-1_BLK_r001.d	Blank		AM 6.1.2 Cannabinoids by LCQQQ	
P2-B6	P2015-2579-1	isp blood cannabinoids Poky 2016.m	P2015-2579-1-r001.d	Sample		AM 6.1.2 Cannabinoids by LCQQQ	Blood
P2-A1	Blank	isp blood cannabinoids Poky 2016.m	cann-Carryover blank2_r001.d	Blank		AM 6.1.2 Cannabinoids by LCQQQ	
P2-C3	Blood 25_125ngmL	isp blood cannabinoids Poky 2016.m	cann-B-25_125-r001.d	Sample		AM 6.1.2 Cannabinoids by LCQQQ	c-THC @125ng/mL, all others @25 ng/mL
P2-A9	Blank P2015-2608-1	isp blood cannabinoids Poky 2016.m	P2015-2608-1_BLK_r001.d	Blank		AM 6.1.2 Cannabinoids by LCQQQ	
P2-B7	P2015-2608-1	isp blood cannabinoids Poky 2016.m	P2015-2608-1-r001.d	Sample		AM 6.1.2 Cannabinoids by LCQQQ	Blood

Sample Position	Sample Name	Method	Data File	Sample Type	Level Name	Comment	Info. ۹
P2-A9	Blank P2015-2683-1	isp blood cannabinoids Poky 2016.m	P2015-2683-1_BLK_r001.d	Blank		AM 6.1.2 Cannabinoids by LCQQQ	
P2-B8	P2015-2683-1	isp blood cannabinoids Poky 2016.m	P2015-2683-1-r001.d	Sample		AM 6.1.2 Cannabinoids by LCQQQ	Blood
P2-A1	Blank	isp blood cannabinoids Poky 2016.m	Blank3-r001.d	Blank		AM 6.1.2 Cannabinoids by LCQQQ	
P1-F9	Blank	Benzos_Z_Drugs_ACN_FA_ISP_2015.m	BZ-Blank1-r001.d	Blank		AM 6.1.1 Benzo and Z by LCQQQ	
P1-F9	Blank	Benzos_Z_Drugs_ACN_FA_ISP_2015.m	BZ-Blank2-r001.d	Blank		AM 6.1.1 Benzo and Z by LCQQQ	
P1-F8	5 ng/mL	Benzos_Z_Drugs_ACN_FA_ISP_2015.m	BZ-5 ng/mL-r001.d	Calibration	1	AM 6.1.1 Benzo and Z by LCQQQ	
P1-F7	10 ng/mL	Benzos_Z_Drugs_ACN_FA_ISP_2015.m	BZ-10 ng/mL-r001.d	Calibration	2	AM 6.1.1 Benzo and Z by LCQQQ	
P1-F6	25 ng/mL	Benzos_Z_Drugs_ACN_FA_ISP_2015.m	BZ-25 ng/mL_r001.d	Calibration	3	AM 6.1.1 Benzo and Z by LCQQQ	
P1-F5	50 ng/mL	Benzos_Z_Drugs_ACN_FA_ISP_2015.m	BZ-50 ng/mL_r001.d	Calibration	4	AM 6.1.1 Benzo and Z by LCQQQ	
P1-F4	100 ng/mL	Benzos_Z_Drugs_ACN_FA_ISP_2015.m	BZ-100 ng/mL_r001.d	Calibration	5	AM 6.1.1 Benzo and Z by LCQQQ	
P1-F3	500 ng/mL	Benzos_Z_Drugs_ACN_FA_ISP_2015.m	BZ-500 ng/mL_r001.d	Calibration	6	AM 6.1.1 Benzo and Z by LCQQQ	
P1-F2	1000 ng/mL	Benzos_Z_Drugs_ACN_FA_ISP_2015.m	BZ-1000 ng/mL_r001.d	Calibration	7	AM 6.1.1 Benzo and Z by LCQQQ	
P1-F1	3000 ng/mL	Benzos_Z_Drugs_ACN_FA_ISP_2015.m	BZ-3000 ng/mL_r001.d	Calibration	8	AM 6.1.1 Benzo and Z by LCQQQ	
P1-F9	Blank	Benzos_Z_Drugs_ACN_FA_ISP_2015.m	BZ-Carryover blank1_r001.d	Blank		AM 6.1.1 Benzo and Z by LCQQQ	
P1-E9	Negative Blood Control	Benzos_Z_Drugs_ACN_FA_ISP_2015.m	BZ-NC-B_r001.d	Sample		AM 6.1.1 Benzo and Z by LCQQQ	UTAK Negative Whole Blood LOT B0689
P1-E8	Positive Blood Control	Benzos_Z_Drugs_ACN_FA_ISP_2015.m	BZ-PC-B-r001.d	Sample		AM 6.1.1 Benzo and Z by LCQQQ	200 ng/mL Benzodiazepines Mix Cerilliant lot FE012413-02 in neg LOT B0130
P1-E9	Blank - M2015- 4078-1	Benzos_Z_Drugs_ACN_FA_ISP_2015.m	BZ-Carryover blank-M2015- 4078-1_r001.d	Blank		AM 6.1.1 Benzo and Z by LCQQQ	
P1-E7	M2015- 4078-1	Benzos_Z_Drugs_ACN_FA_ISP_2015.m	BZ-M2015-4078-1- r001.d	Sample		AM 6.1.1 Benzo and Z by LCQQQ	Blood
P1-E9	Blank - M2015- 4198-1	Benzos_Z_Drugs_ACN_FA_ISP_2015.m	BZ-Carryover blank-M2015- 4198-1_r001.d	Blank		AM 6.1.1 Benzo and Z by LCQQQ	
P1-E6	M2015- 4198-1	Benzos_Z_Drugs_ACN_FA_ISP_2015.m	BZ-M2015-4198-1- r001.d	Sample		AM 6.1.1 Benzo and Z by LCQQQ	Blood
P1-E9		Benzos_Z_Drugs_ACN_FA_ISP_2015.m		Blank			

Sample Position	Sample Name	Method	Data File	Sample Type	Level Name	Comment	Info. ๕
	Blank - P2015-2580-1		BZ-Carryover blank-P2015-2580-1_r001.d			AM 6.1.1 Benzo and Z by LCQQQ	
P1-E5	P2015-2580-1	Benzos_Z_Drugs_ACN_FA_ISP_2015.m	BZ-P2015-2580-1-r001.d	Sample		AM 6.1.1 Benzo and Z by LCQQQ	Blood
P1-E9	Blank - P2015-2683-1	Benzos_Z_Drugs_ACN_FA_ISP_2015.m	BZ-Carryover blank-P2015-2683-1_r001.d	Blank		AM 6.1.1 Benzo and Z by LCQQQ	
P1-E4	P2015-2683-1	Benzos_Z_Drugs_ACN_FA_ISP_2015.m	BZ-P2015-2683-1-r001.d	Sample		AM 6.1.1 Benzo and Z by LCQQQ	Blood
P1-F9	Blank	Benzos_Z_Drugs_ACN_FA_ISP_2015.m	BZ-Carryover blank3_r001.d	Blank		AM 6.1.1 Benzo and Z by LCQQQ	

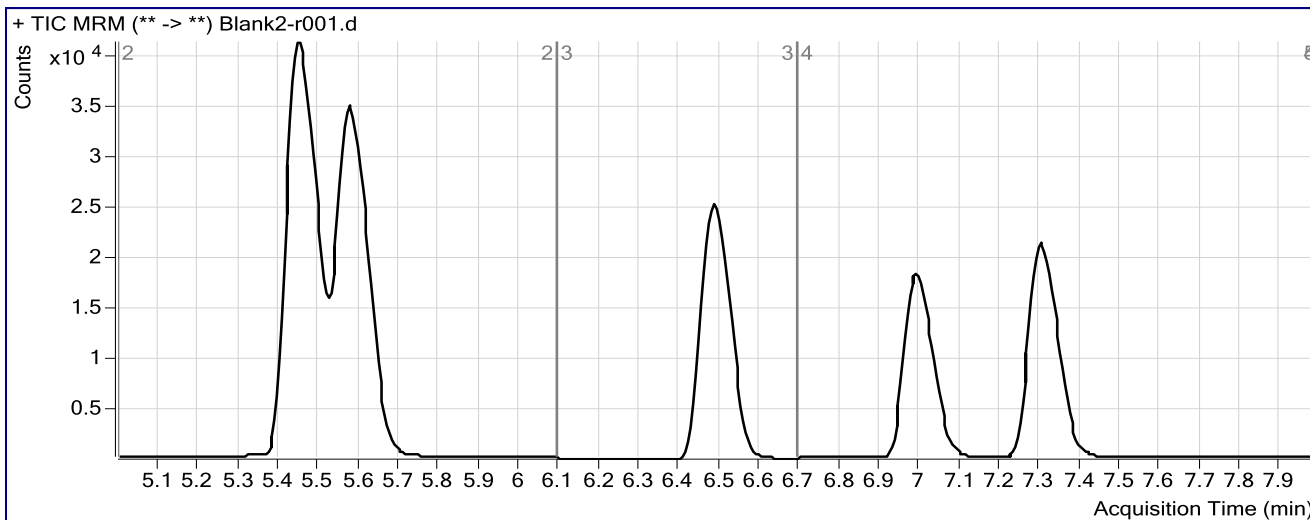
ISP FORENSICS Pocatello Cannabinoid Analysis Report

Batch Data Path	C:\MassHunter\Data\2016\CANN\022216 CANN CS\QuantResults\022216 CANN CS.batch.bin		
Analysis Time	2/24/2016 9:57 AM	Analyst Name	ISPUser
Report Time	2/24/2016 10:01 AM	Reporter Name	ISPUser
Last Calib Update	2/24/2016 9:57 AM	Batch State	Processed

Analysis Info

Acq Time	2016-02-22 12:33	Data File	Blank2-r001.d
Sample Type	Blank	Sample Name	Blank
Dilution	1	Acq Method	isp blood cannabinoids Poky 2016.m
Position	P2-A1	Sample Info	
Inj Vol	-1	Comment	AM 6.1.2 Cannabinoids by LCQQQ

Sample Chromatogram



ISP FORENSICS

Pocatello

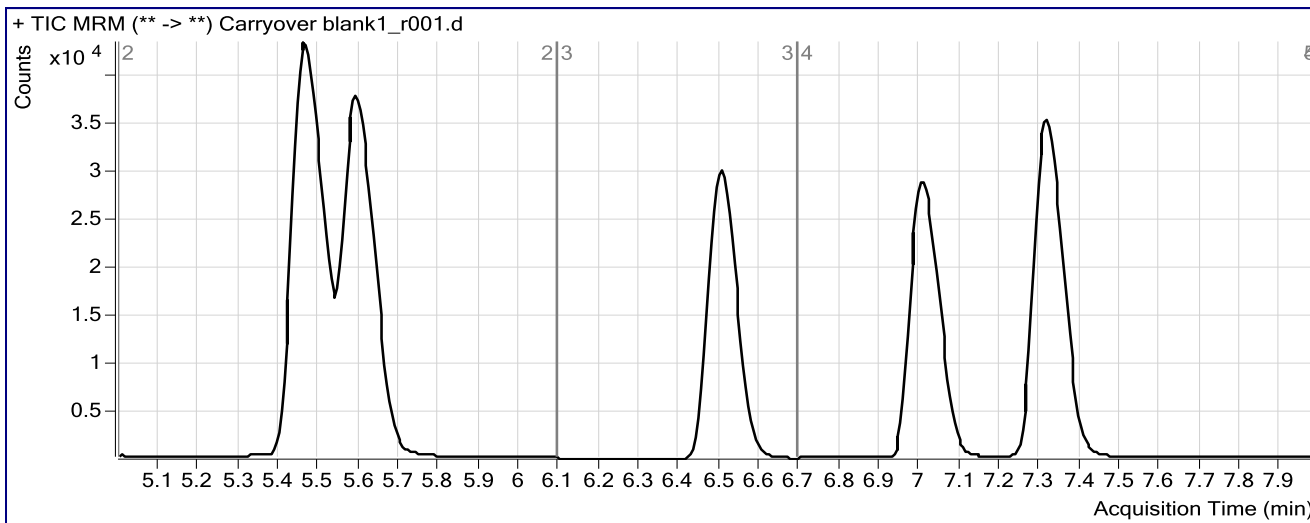
Cannabinoid Analysis Report

Batch Data Path C:\MassHunter\Data\2016\CANN\022216 CANN CS\QuantResults\022216 CANN CS.batch.bin
Analysis Time 2/24/2016 9:57 AM **Analyst Name** ISPUser
Report Time 2/24/2016 10:02 AM **Reporter Name** ISPUser
Last Calib Update 2/24/2016 9:57 AM **Batch State** Processed

Analysis Info

Acq Time 2016-02-22 14:19 **Data File** Carryover blank1_r001.d
Sample Type Blank **Sample Name** Blank
Dilution 1 **Acq Method** isp blood cannabinoids Poky 2016.m
Position P2-A1 **Sample Info**
Inj Vol -1 **Comment** AM 6.1.2 Cannabinoids by LCQQQ

Sample Chromatogram



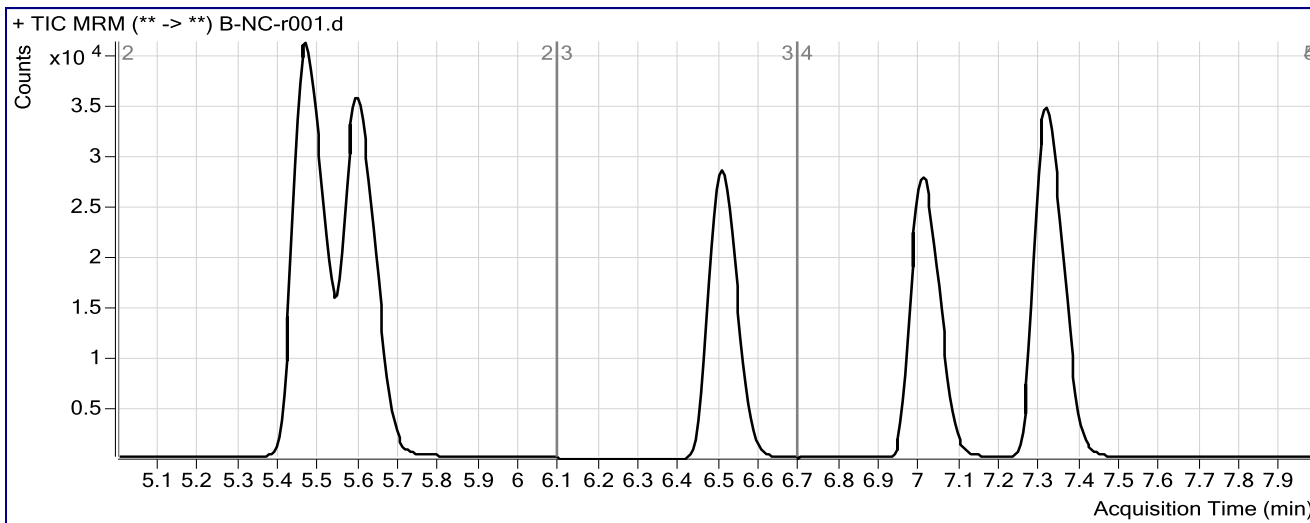
ISP FORENSICS Pocatello Cannabinoid Analysis Report

Batch Data Path	C:\MassHunter\Data\2016\CANN\022216 CANN CS\QuantResults\022216 CANN CS.batch.bin		
Analysis Time	2/24/2016 9:57 AM	Analyst Name	ISPUser
Report Time	2/24/2016 10:02 AM	Reporter Name	ISPUser
Last Calib Update	2/24/2016 9:57 AM	Batch State	Processed

Analysis Info

Acq Time	2016-02-22 14:32	Data File	B-NC-r001.d
Sample Type	Sample	Sample Name	Blood Negative Control
Dilution	1	Acq Method	isp blood cannabinoids Poky 2016.m
Position	P2-A9	Sample Info	Negative Blood UTAK Lot B0689
Inj Vol	-1	Comment	AM 6.1.2 Cannabinoids by LCQQQ

Sample Chromatogram



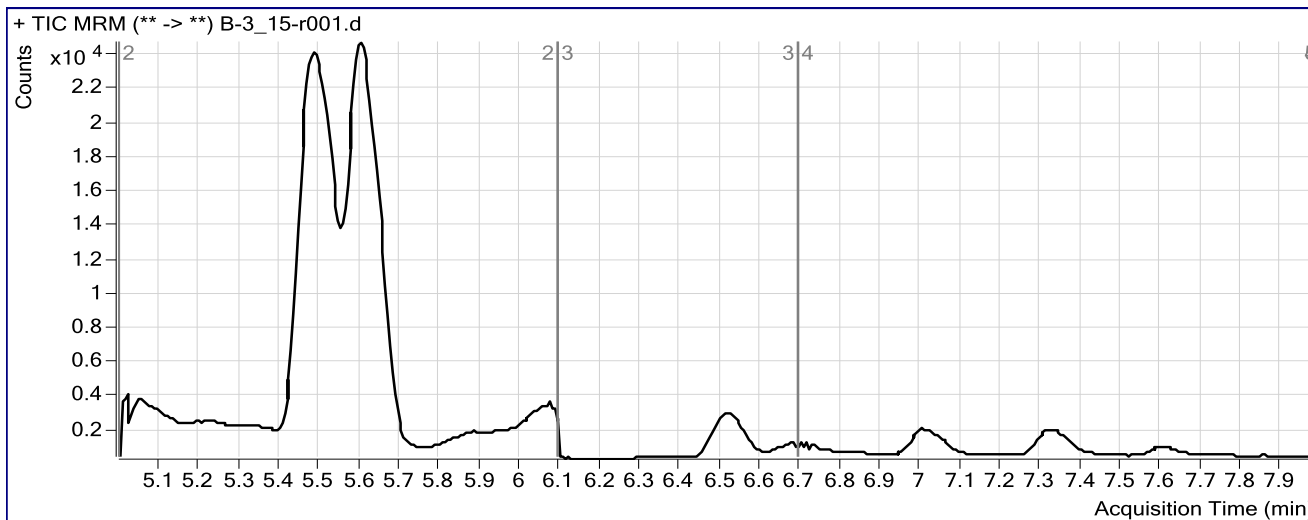
ISP FORENSICS Pocatello Cannabinoid Analysis Report

Batch Data Path	C:\MassHunter\Data\2016\CANN\022216 CANN CS\QuantResults\022216 CANN CS.batch.bin		
Analysis Time	2/24/2016 9:57 AM	Analyst Name	ISPUser
Report Time	2/24/2016 10:02 AM	Reporter Name	ISPUser
Last Calib Update	2/24/2016 9:57 AM	Batch State	Processed

Analysis Info

Acq Time	2016-02-22 14:46	Data File	B-3_15-r001.d
Sample Type	Sample	Sample Name	Blood 3_15ngmL
Dilution	1	Acq Method	isp blood cannabinoids Poky 2016.m
Position	P2-B1	Sample Info	c-THC @15ng/mL, all others @3 ng/mL
Inj Vol	-1	Comment	AM 6.1.2 Cannabinoids by LCQQQ

Sample Chromatogram



Results

Compound	ISTD Compound	RT	Response	ISTD Resp	Resp Ratio	Final Conc
OH-THC	OH-THC-d3	5.499	35386	73571	0.4810	5.3255
THC-COOH	THC-COOH-d3	5.608	27601	17640	1.5647	14.9336
Cannabidiol	Cannabidiol-d3	6.522	1255	4267	0.2940	3.2324
Cannabinol	Cannabinol-d3	7.013	1496	4772	0.3136	3.8865
THC	THC-d3	7.324	869	2692	0.3229	4.2691

ISP FORENSICS

Pocatello

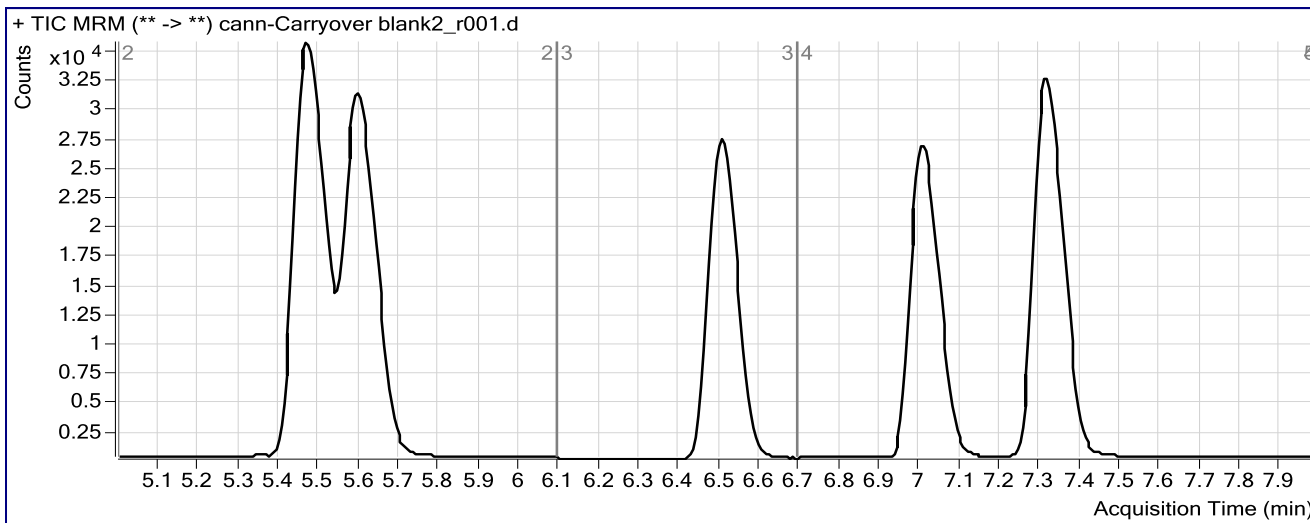
Cannabinoid Analysis Report

Batch Data Path	C:\MassHunter\Data\2016\CANN\022216 CANN CS\QuantResults\022216 CANN CS.batch.bin		
Analysis Time	2/24/2016 9:57 AM	Analyst Name	ISPUser
Report Time	2/24/2016 10:03 AM	Reporter Name	ISPUser
Last Calib Update	2/24/2016 9:57 AM	Batch State	Processed

Analysis Info

Acq Time	2016-02-22 17:12	Data File	cann-Carryover blank2_r001.d
Sample Type	Blank	Sample Name	Blank
Dilution	1	Acq Method	isp blood cannabinoids Poky 2016.m
Position	P2-A1	Sample Info	
Inj Vol	-1	Comment	AM 6.1.2 Cannabinoids by LCQQQ

Sample Chromatogram



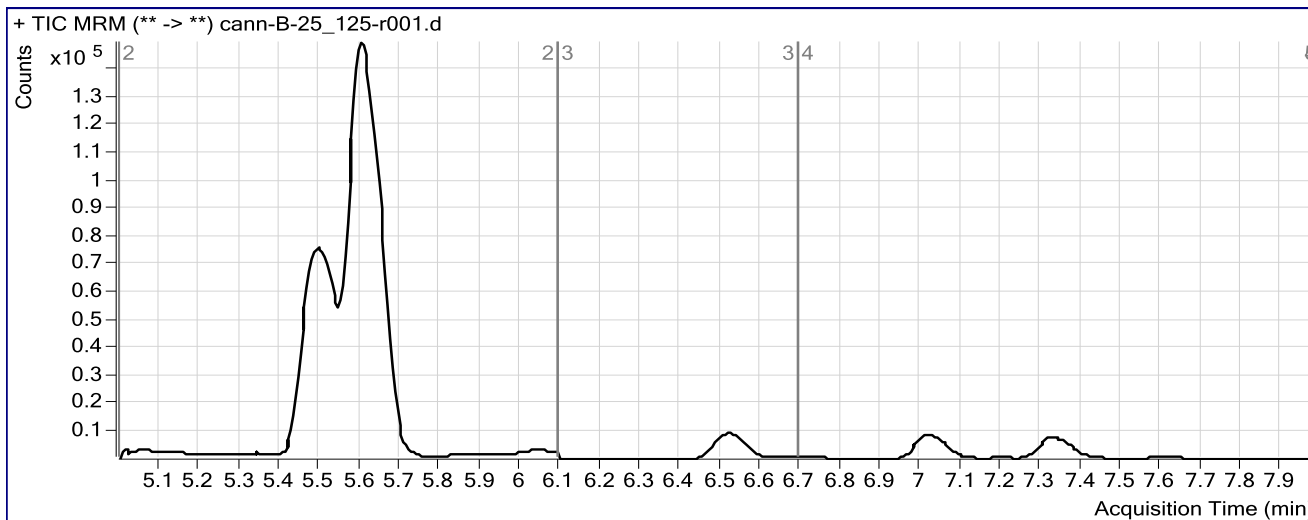
ISP FORENSICS Pocatello Cannabinoid Analysis Report

Batch Data Path C:\MassHunter\Data\2016\CANN\022216 CANN CS\QuantResults\022216 CANN CS.batch.bin
Analysis Time 2/24/2016 9:57 AM **Analyst Name** ISPUser
Report Time 2/24/2016 10:03 AM **Reporter Name** ISPUser
Last Calib Update 2/24/2016 9:57 AM **Batch State** Processed

Analysis Info

Acq Time 2016-02-22 17:25 **Data File** cann-B-25_125-r001.d
Sample Type Sample **Sample Name** Blood 25_125ngmL
Dilution 1 **Acq Method** isp blood cannabinoids Poky 2016.m
Position P2-C3 **Sample Info** c-THC @125ng/mL, all others @25 ng/mL
Inj Vol -1 **Comment** AM 6.1.2 Cannabinoids by LCQQQ

Sample Chromatogram



Results

Compound	ISTD Compound	RT	Response	ISTD Resp	Resp Ratio	Final Conc
OH-THC	OH-THC-d3	5.499	319415	30178	10.5843	86.1442
THC-COOH	THC-COOH-d3	5.608	280568	13984	20.0630	173.1413
Cannabidiol	Cannabidiol-d3	6.522	16585	2379	6.9724	72.6437
Cannabinol	Cannabinol-d3	7.018	23306	3576	6.5175	80.7514
THC	THC-d3	7.324	13728	2288	5.9998	73.6488

ISP FORENSICS

Pocatello

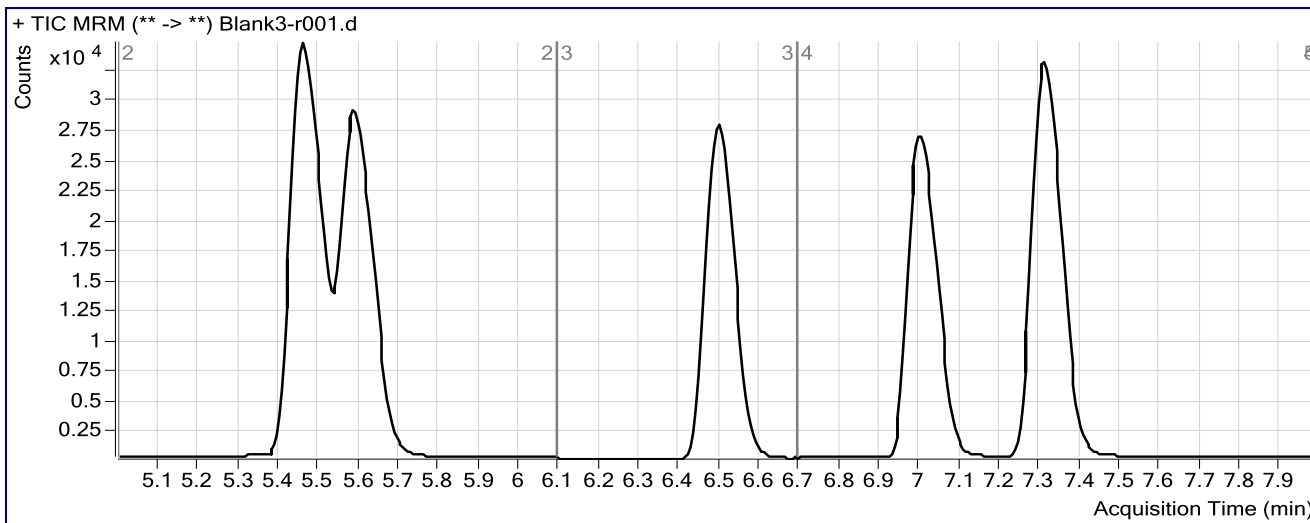
Cannabinoid Analysis Report

Batch Data Path C:\MassHunter\Data\2016\CANN\022216 CANN CS\QuantResults\022216 CANN CS.batch.bin
Analysis Time 2/24/2016 9:57 AM **Analyst Name** ISPUser
Report Time 2/24/2016 10:03 AM **Reporter Name** ISPUser
Last Calib Update 2/24/2016 9:57 AM **Batch State** Processed

Analysis Info

Acq Time 2016-02-22 18:31 **Data File** Blank3-r001.d
Sample Type Blank **Sample Name** Blank
Dilution 1 **Acq Method** isp blood cannabinoids Poky 2016.m
Position P2-A1 **Sample Info**
Inj Vol -1 **Comment** AM 6.1.2 Cannabinoids by LCQQQ

Sample Chromatogram



ISP Forensics Calibration Curve Report

CS

Batch Data Path C:\MassHunter\Data\2016\CANN\022216 CANN CS\QuantResults\022216 CANN CS.batch.bin

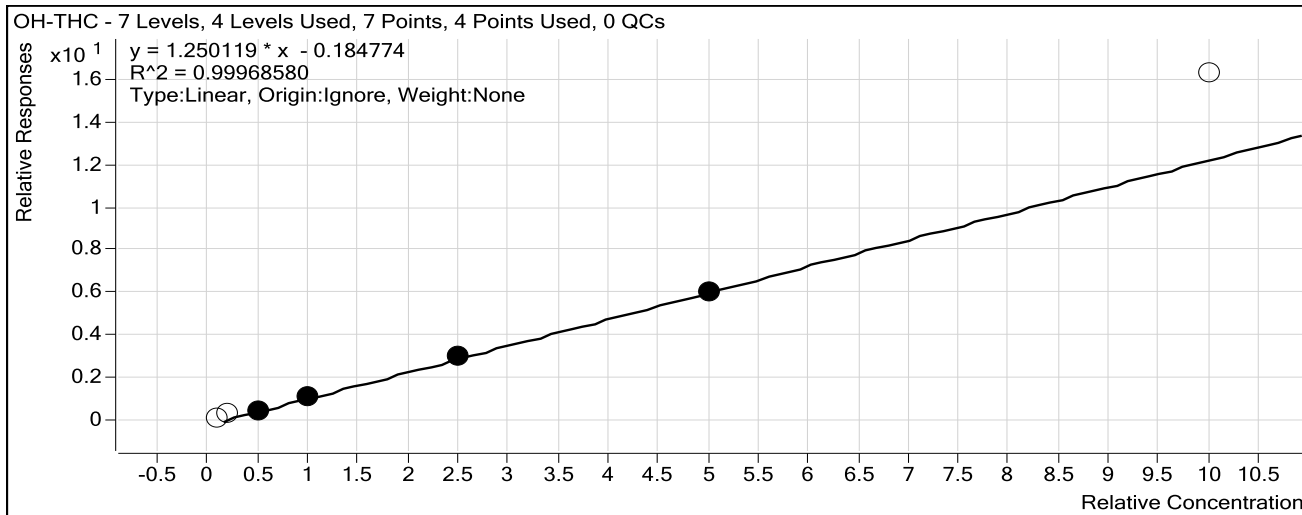
Last Calib Update 2/24/2016 9:57 AM

Analyst Name

ISP TOX

Target Compound *OH-THC*

Internal Standard *OH-THC-d3*



Sample	Level	Enabled	Exp Conc	Final Conc	Accuracy
Blood: 1_5 ng/mL	1	<input type="checkbox"/>	1	2.5	245.1
Blood: 2_10 ng/mL	2	<input type="checkbox"/>	2	3.5	173.9
Blood: 5_25 ng/mL	3	<input checked="" type="checkbox"/>	5	4.6	91.5
Blood: 10_50 ng/mL	4	<input checked="" type="checkbox"/>	10	10.3	102.9
Blood: 25_125 ng/mL	5	<input checked="" type="checkbox"/>	25	25.3	101.2
Blood: 50_250 ng/mL	6	<input checked="" type="checkbox"/>	50	49.8	99.7
Blood: 100_500 ng/mL	7	<input type="checkbox"/>	100	131.9	131.9

ISP Forensics Calibration Curve Report

CS

Batch Data Path C:\MassHunter\Data\2016\CANN\022216 CANN CS\QuantResults\022216 CANN CS.batch.bin

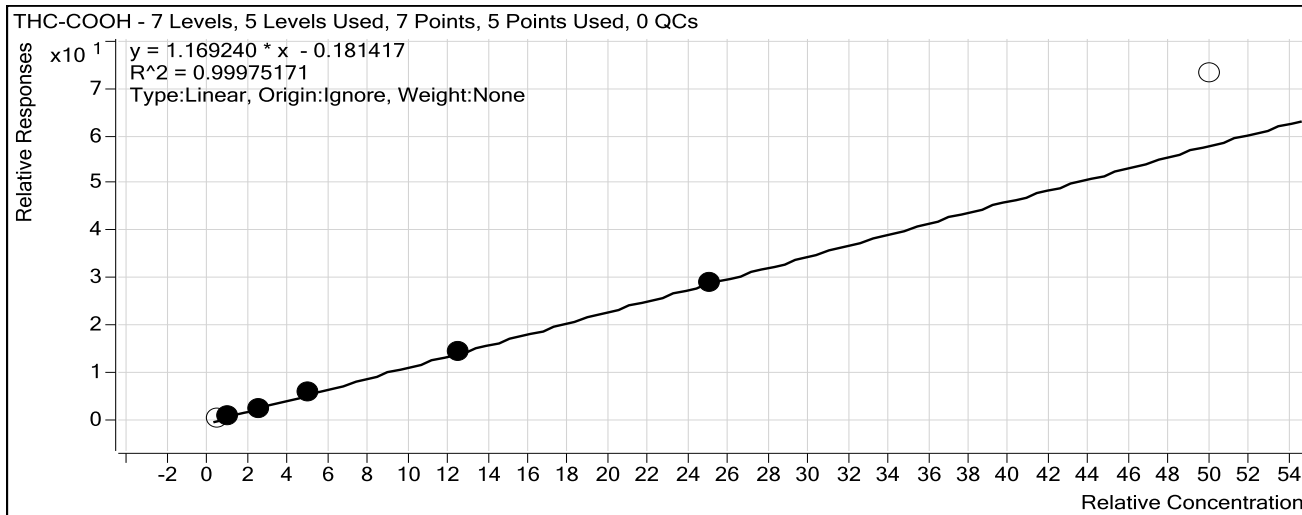
Last Calib Update 2/24/2016 9:57 AM

Analyst Name

ISP TOX

Target Compound *THC-COOH*

Internal Standard *THC-COOH-d3*



Sample	Level	Enabled	Exp Conc	Final Conc	Accuracy
Blood: 1_5 ng/mL	1	<input type="checkbox"/>	5	6.8	135.5
Blood: 2_10 ng/mL	2	<input checked="" type="checkbox"/>	10	10.8	108.3
Blood: 5_25 ng/mL	3	<input checked="" type="checkbox"/>	25	22.5	89.9
Blood: 10_50 ng/mL	4	<input checked="" type="checkbox"/>	50	51.4	102.8
Blood: 25_125 ng/mL	5	<input checked="" type="checkbox"/>	125	125.7	100.6
Blood: 50_250 ng/mL	6	<input checked="" type="checkbox"/>	250	249.6	99.8
Blood: 100_500 ng/mL	7	<input type="checkbox"/>	500	627.0	125.4

ISP Forensics Calibration Curve Report

CS

Batch Data Path C:\MassHunter\Data\2016\CANN\022216 CANN CS\QuantResults\022216 CANN CS.batch.bin

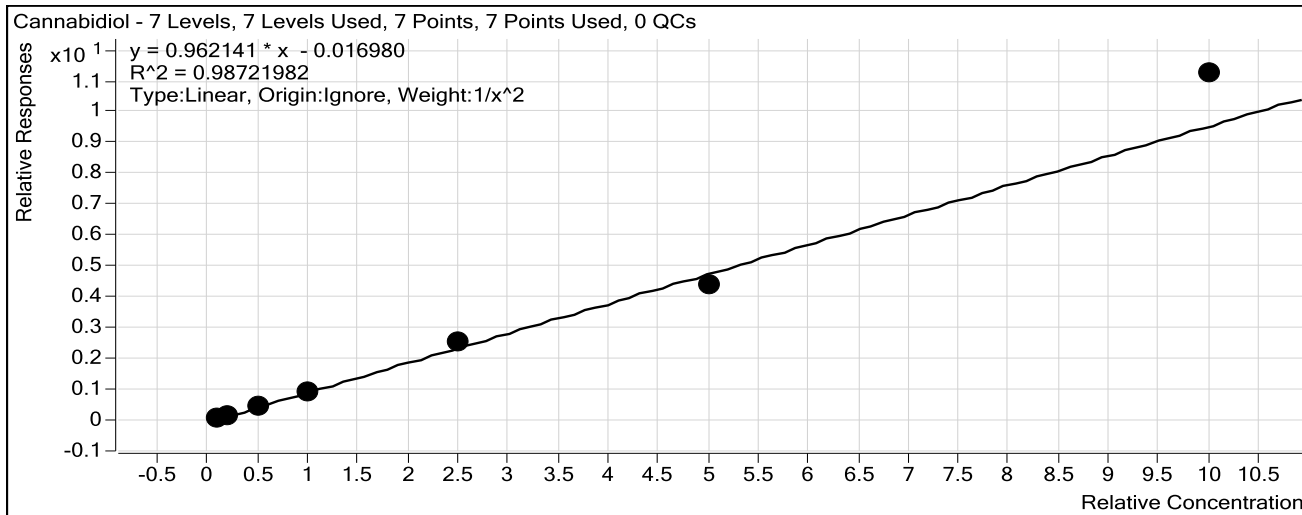
Last Calib Update 2/24/2016 9:57 AM

Analyst Name

ISP TOX

Target Compound *Cannabidiol*

Internal Standard *Cannabidiol-d3*



Sample	Level	Enabled	Exp Conc	Final Conc	Accuracy
Blood: 1_5 ng/mL	1	<input checked="" type="checkbox"/>	1	1.1	105.9
Blood: 2_10 ng/mL	2	<input checked="" type="checkbox"/>	2	1.8	90.6
Blood: 5_25 ng/mL	3	<input checked="" type="checkbox"/>	5	4.8	96.2
Blood: 10_50 ng/mL	4	<input checked="" type="checkbox"/>	10	9.3	93.5
Blood: 25_125 ng/mL	5	<input checked="" type="checkbox"/>	25	26.2	104.9
Blood: 50_250 ng/mL	6	<input checked="" type="checkbox"/>	50	46.0	92.0
Blood: 100_500 ng/mL	7	<input checked="" type="checkbox"/>	100	117.0	117.0

ISP Forensics Calibration Curve Report

Batch Data Path C:\MassHunter\Data\2016\CANN\022216 CANN CS\QuantResults\022216 CANN CS.batch.bin

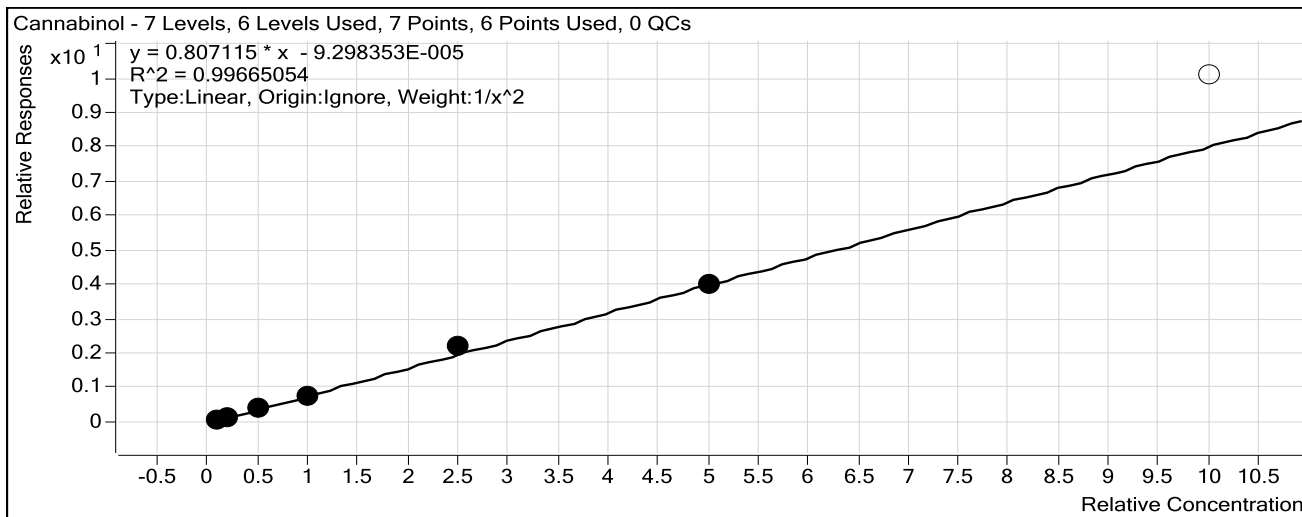
Last Calib Update 2/24/2016 9:57 AM

Analyst Name

ISP TOX

Target Compound *Cannabinol*

Internal Standard *Cannabinol-d3*



Sample	Level	Enabled	Exp Conc	Final Conc	Accuracy
Blood: 1_5 ng/mL	1	<input checked="" type="checkbox"/>	1	1.0	102.9
Blood: 2_10 ng/mL	2	<input checked="" type="checkbox"/>	2	1.9	94.9
Blood: 5_25 ng/mL	3	<input checked="" type="checkbox"/>	5	4.9	98.7
Blood: 10_50 ng/mL	4	<input checked="" type="checkbox"/>	10	9.6	96.1
Blood: 25_125 ng/mL	5	<input checked="" type="checkbox"/>	25	26.9	107.8
Blood: 50_250 ng/mL	6	<input checked="" type="checkbox"/>	50	49.8	99.7
Blood: 100_500 ng/mL	7	<input type="checkbox"/>	100	124.9	124.9

ISP Forensics Calibration Curve Report

CS

Batch Data Path C:\MassHunter\Data\2016\CANN\022216 CANN CS\QuantResults\022216 CANN CS.batch.bin

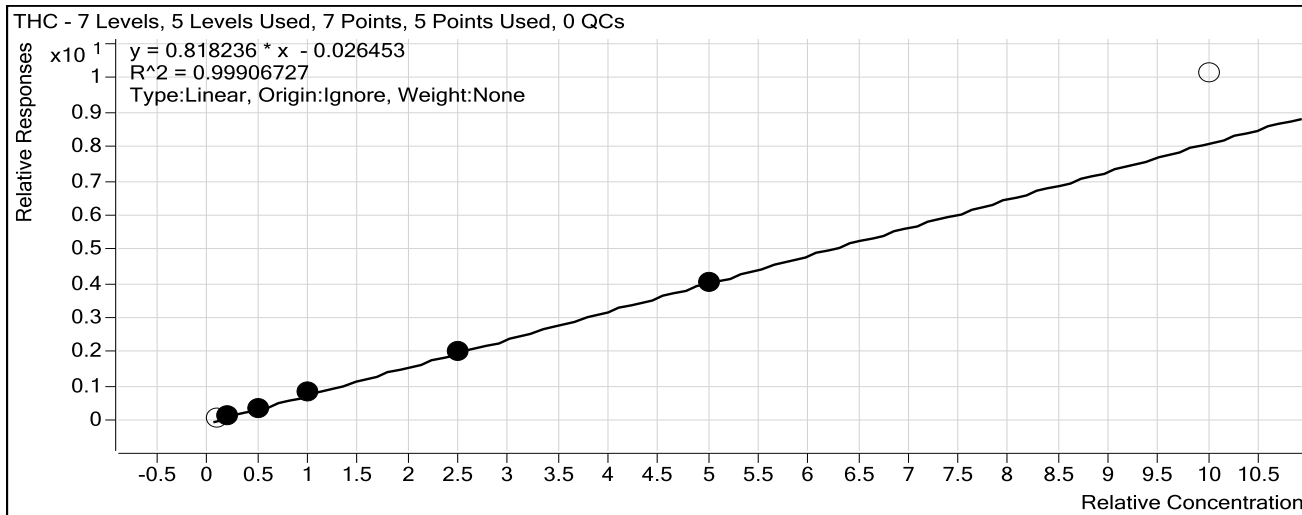
Last Calib Update 2/24/2016 9:57 AM

Analyst Name

ISP TOX

Target Compound *THC*

Internal Standard *THC-d3*



Sample	Level	Enabled	Exp Conc	Final Conc	Accuracy
Blood: 1_5 ng/mL	1	<input type="checkbox"/>	1	1.6	157.1
Blood: 2_10 ng/mL	2	<input checked="" type="checkbox"/>	2	1.9	94.7
Blood: 5_25 ng/mL	3	<input checked="" type="checkbox"/>	5	4.3	86.7
Blood: 10_50 ng/mL	4	<input checked="" type="checkbox"/>	10	11.0	109.9
Blood: 25_125 ng/mL	5	<input checked="" type="checkbox"/>	25	24.8	99.3
Blood: 50_250 ng/mL	6	<input checked="" type="checkbox"/>	50	50.0	99.9
Blood: 100_500 ng/mL	7	<input type="checkbox"/>	100	124.3	124.3